

YOU CAN FIND
THE BEST RUBBER CRAWLER CARRIER HERE!

WB18Y-DTB



MAX. LOADING CAPACITY

1,800KGS



ENCLOSED TYPE VESSEL

No gaps in the cargo box, making it effective for transporting mud and moisture-laden earth and sand.



HST SYSTEM

Pedal forward/reverse operation reduces the hassle of switching levers.



CRAWLER TENSION UNIT

Tension bolt with spring automatically adjust tension of rubber crawler avoid damages caused by the bite of pebbles and wood chips.

What's Special?



CENTER SEAT
Can keep balance for safety drive.



FULL-OPEN ENGINE COVER
Easy to perform maintenance.

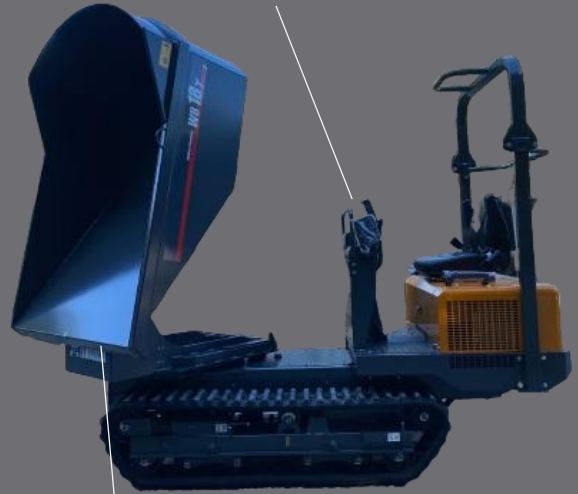


SIMPLE OPERATION
Simplified controls for complex operation.



ENGINE
Kubota engine D902-E4B vertical, water-cooled four-cycle diesel engine 15.9kw / 21.6(ps)

Submission lever
Can switch high/low lever depending on the weight of the luggage.



Swing and dump 180 degrees
Can save time and increase productivity.

Machine Size

Overall Length	mm	2,955
Overall Width	mm	1,330
Overall Height	mm	2,230
Ground Clearance	mm	195
Machine Weight	kg	1,245

Crawler

Crawler Centre	mm	950
Ground Contact Width	mm	280

Travel

Operating	-	Wet Multi-plate
Transmission	-	F2·R2

Speed

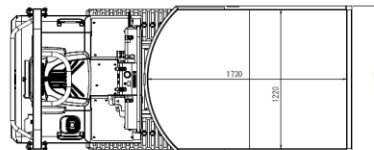
Forward	km/h	0~2.9(0~3.3)/0~6.2(0~7.4)
Reverse	km/h	0~2.1(0~2.3)/0~4.6(0~5.0)

Engine

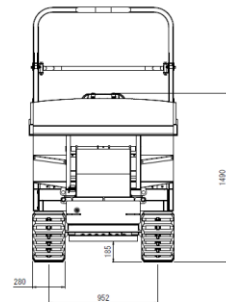
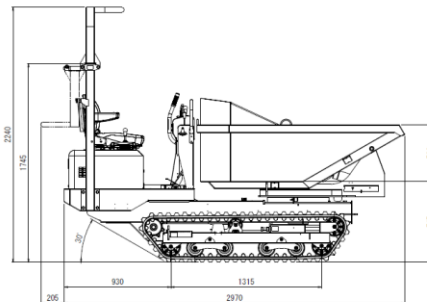
Type	-	Three-way Open & Dump
Output	kw(ps)	12.9(16.1)
Displacement	cc	898
Starting method	-	Cell
Fuel Tank Capacity	L	20.0

Bucket Type

Bucket Type	-	210°
Floor Height	mm	685
Overall Length	mm	1,730
Overall Width	mm	1,220
Overall Height	mm	500
Max. Loading Capacity	kg	1,800
Deck Body Capacity	m ³	0.73
Dumping Angle	°	80



WB18 γ-DTB



WINBULL YAMAGUCHI CORPORATION
Website: <http://winbull.co.jp/>

Head Office (Factory, Trading Division, Domestic Sales Division) :
399 Tojitsu, Kato-shi, Hyogo Pref., Japan, 673-1434

Kobe Office (Overseas Division) :

Park Court Motomachi WEST 5F,
6-1-4 Motomachi-dori, Chuo-ku, Kobe, Hyogo Pref., Japan, 650-0022